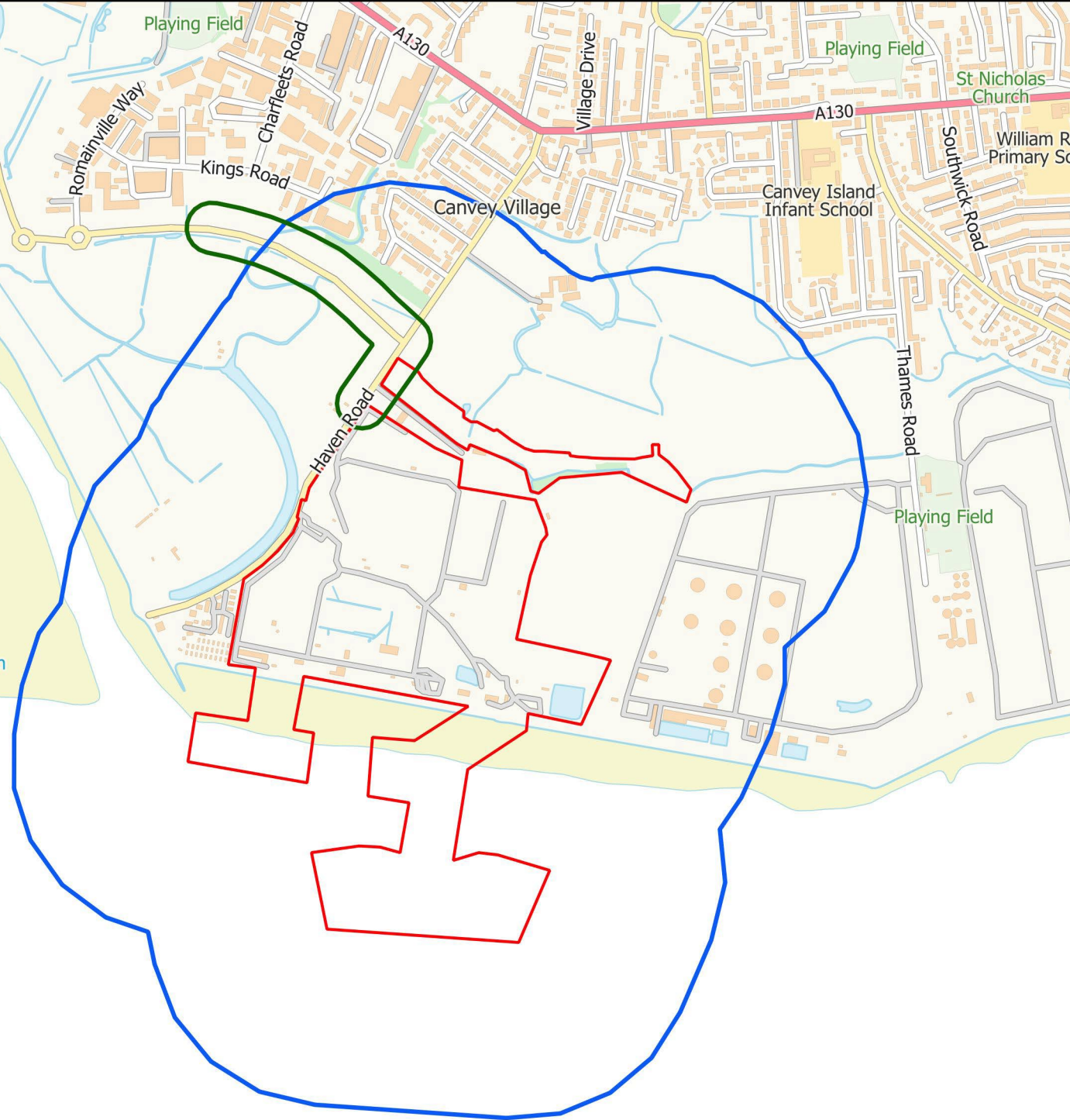




Hole Haven



- KEY**
- OMSSD Project Boundary
 - Construction Works - 350 m Zone
 - Construction Traffic - 50 m Zone

OIKOS MARINE & SOUTH SIDE DEVELOPMENT

FIGURE 12.1

TITLE: CONSTRUCTION DUST ASSESSMENT STUDY AREA

Source: Air Quality Consultants Ltd

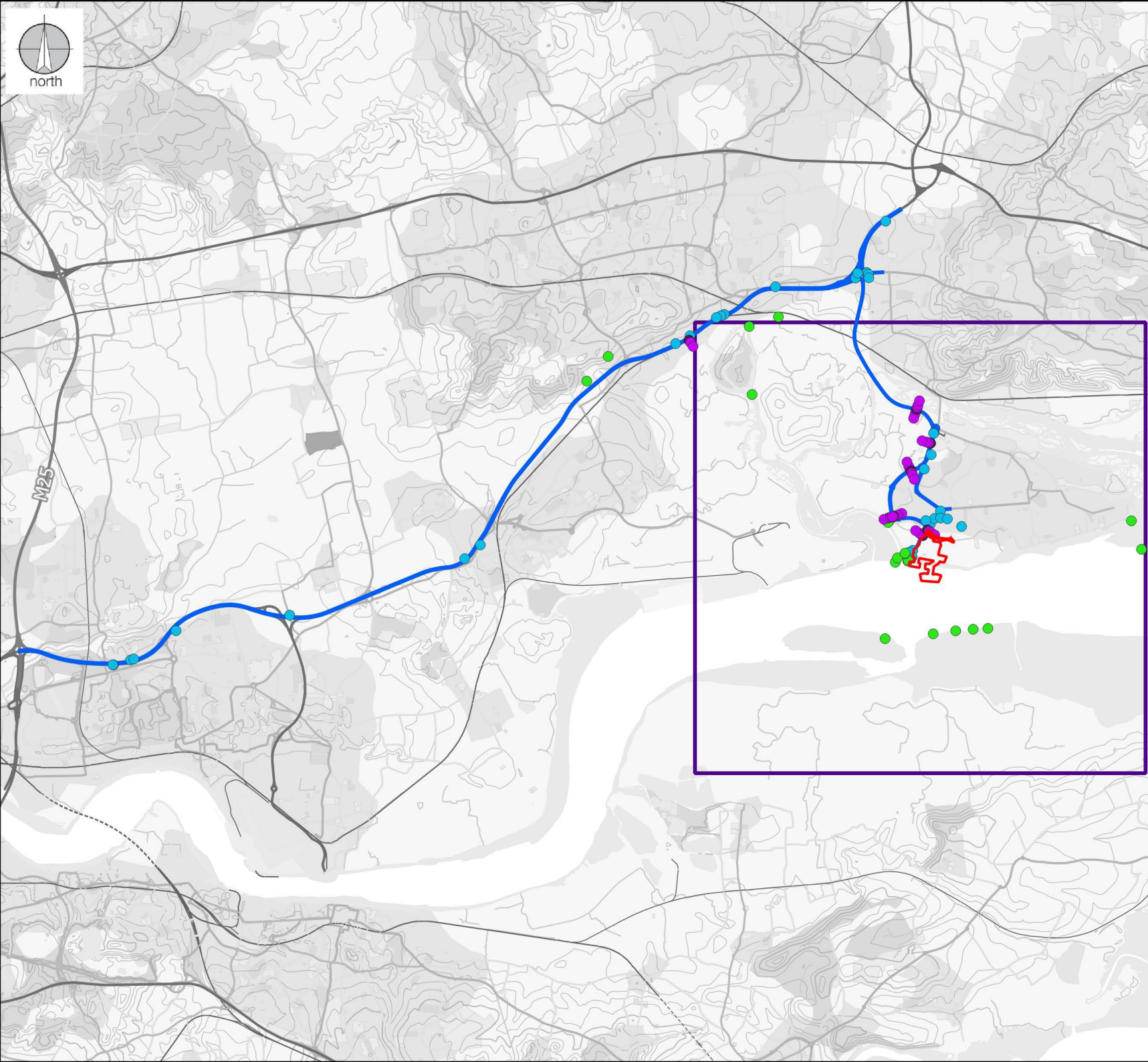
Drawn by: FM

Date: 03/21



Contains Ordnance Survey data © Crown copyright and database right 2021. Ordnance Survey licence number 100046099. Additional data sourced from third parties, including public sector information licensed under the Open Government Licence v1.0.





KEY

- OMSSD Project Boundary
- Modelled Road Network
- Ecological Transect Receptors
- Specific Ecological Receptors
- Specific Human Health Receptors
- Auxiliary Generator Grid Extent

OIKOS MARINE & SOUTH SIDE DEVELOPMENT

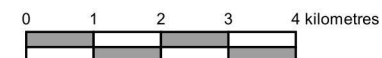
FIGURE 12.2

TITLE: OPERATIONAL PHASE ASSESSMENT STUDY AREA

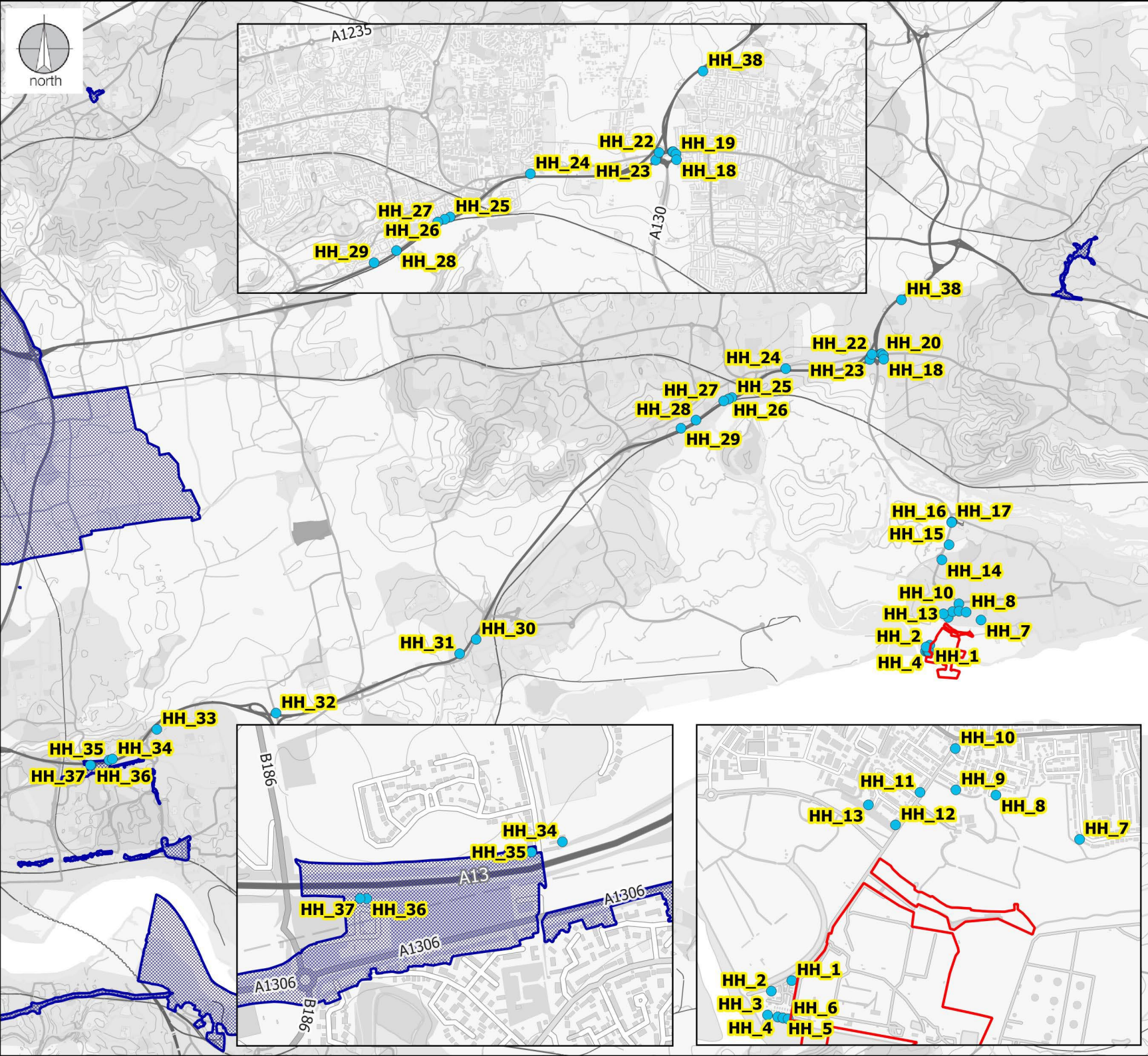
Source: Air Quality Consultants Ltd

Drawn by: FM

Date: 03/21



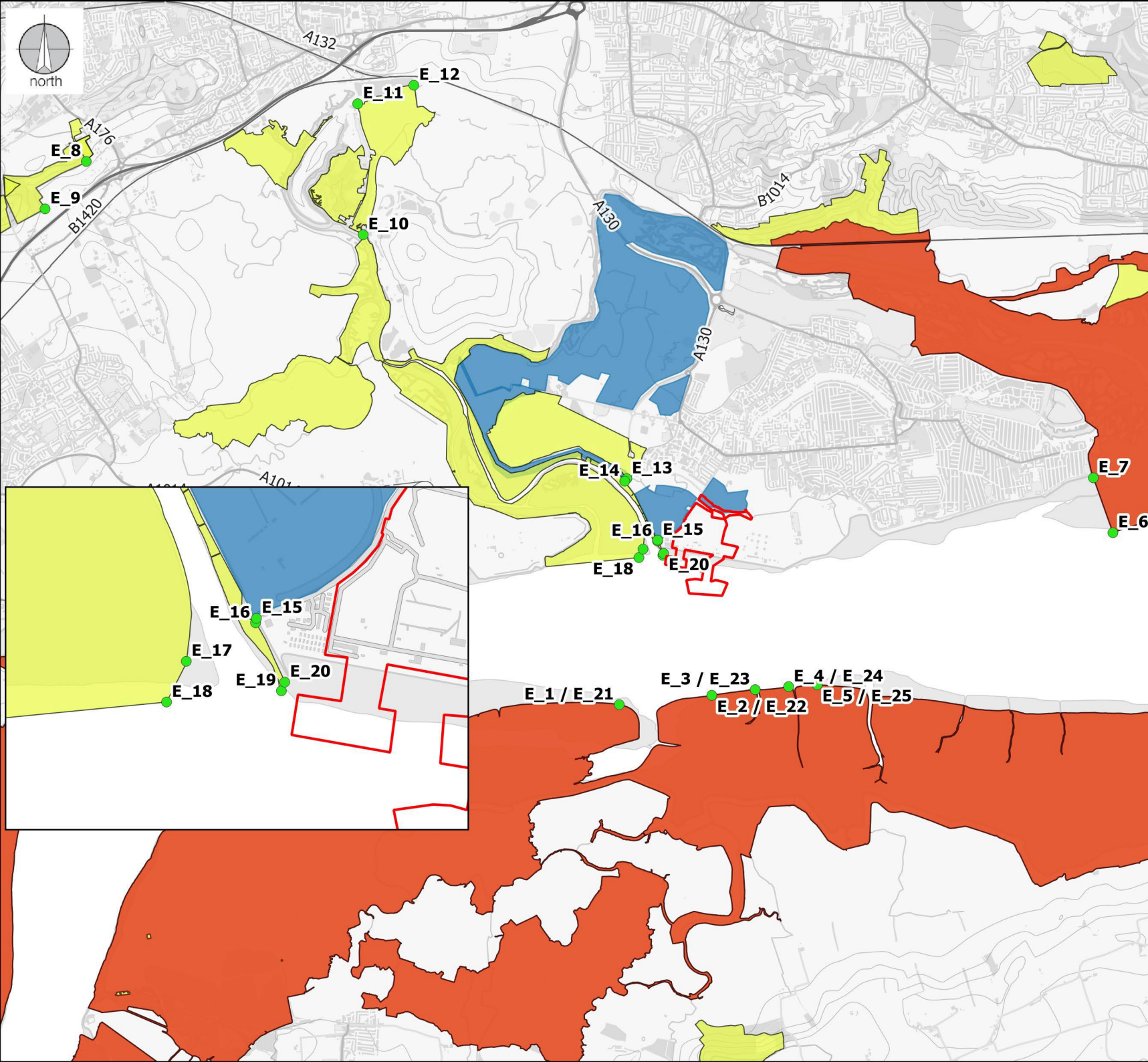
Contains Ordnance Survey data © Crown copyright and database right 2021. Ordnance Survey licence number 100046099. Additional data sourced from third parties, including public sector information licensed under the Open Government Licence v1.0.



OIKOS MARINE & SOUTH SIDE DEVELOPMENT

FIGURE 12.3

TITLE: SENSITIVE HUMAN HEALTH RECEPTOR LOCATIONS



KEY

- OMSSD Project Boundary
- Specific Ecological Receptors
- Special Protection Area / Ramsar
- Site of Special Scientific Interest
- Local Wildlife Site

OIKOS MARINE & SOUTH SIDE DEVELOPMENT

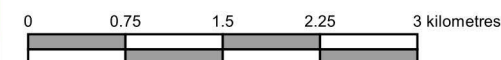
FIGURE 12.4

TITLE: SENSITIVE ECOLOGICAL RECEPTOR LOCATIONS

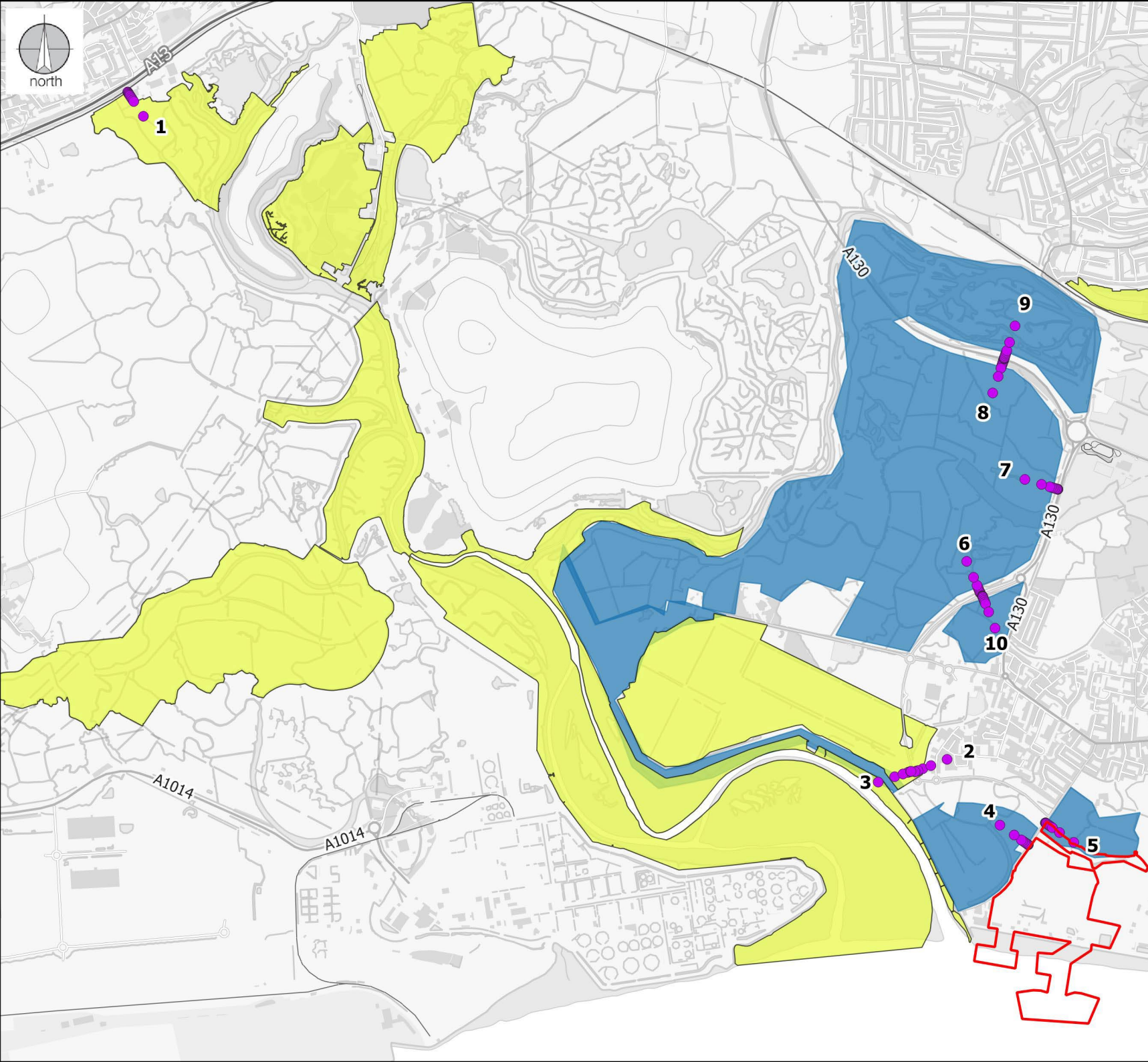
Source: Air Quality Consultants Ltd

Drawn by: FM

Date: 03/21



Contains Ordnance Survey data © Crown copyright and database right 2021. Ordnance Survey licence number 100046099. Additional data sourced from third parties, including public sector information licensed under the Open Government Licence v1.0.



KEY

- OMSSD Project Boundary
- Transects
- Site of Special Scientific Interest
- Local Wildlife Site

OIKOS MARINE & SOUTH SIDE DEVELOPMENT

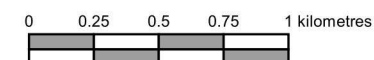
FIGURE 12.5

TITLE: ECOLOGICAL TRANSECT RECEPTOR LOCATIONS

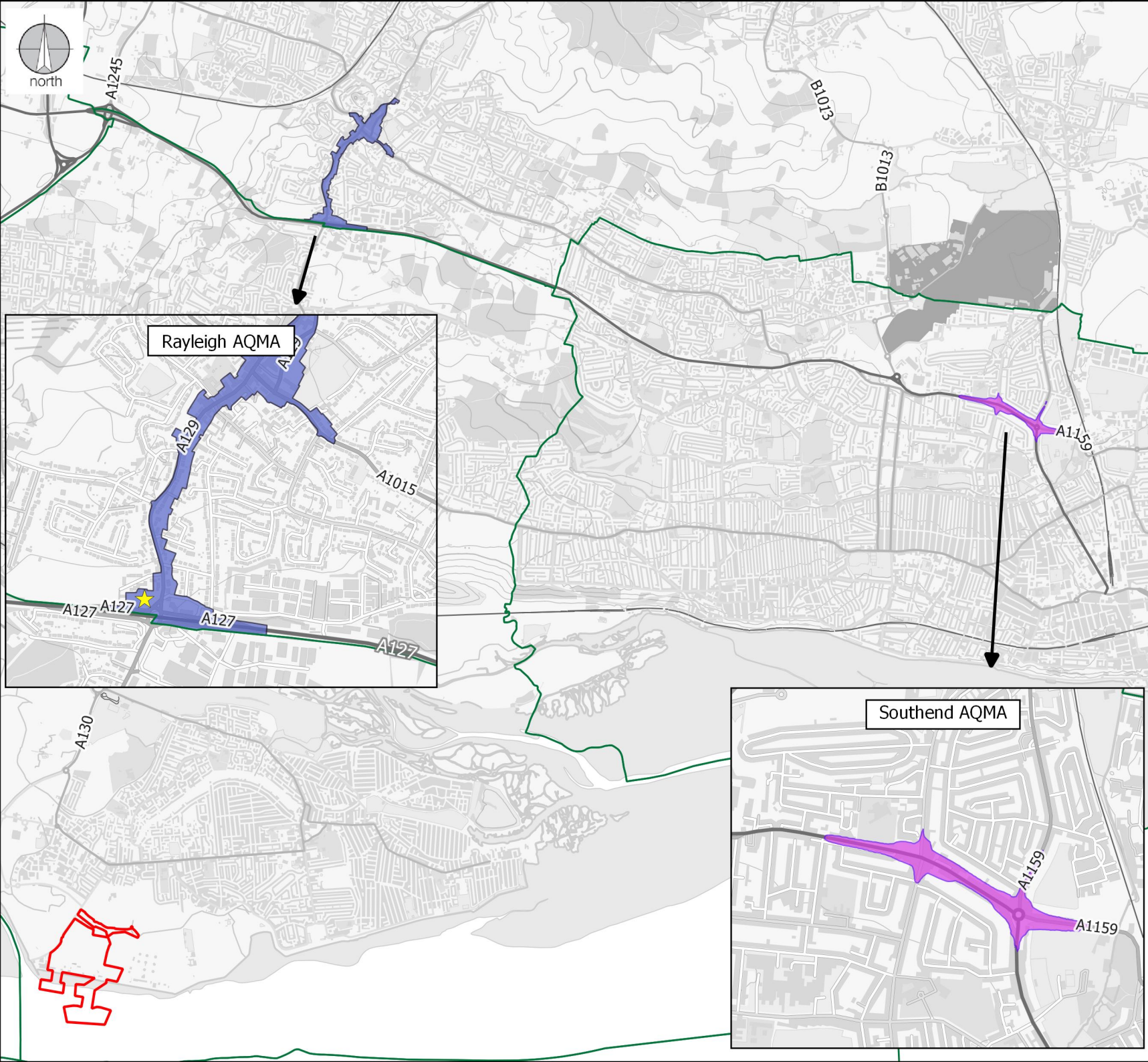
Source: Air Quality Consultants Ltd

Drawn by: FM

Date: 03/21



Contains Ordnance Survey data © Crown copyright and database right 2021. Ordnance Survey licence number 100046099. Additional data sourced from third parties, including public sector information licensed under the Open Government Licence v1.0.



KEY

- OMSSD Project Boundary
- Local Authority Boundaries
- AQMAs**
- Rochford District Council
- Southend Borough Council
- ★ Nearest Receptor to A127 in Rayleigh AQMA

OIKOS MARINE & SOUTH SIDE DEVELOPMENT

FIGURE 12.6

TITLE: LOCATIONS OF RAYLEIGH AND SOUTHEND AQMAS

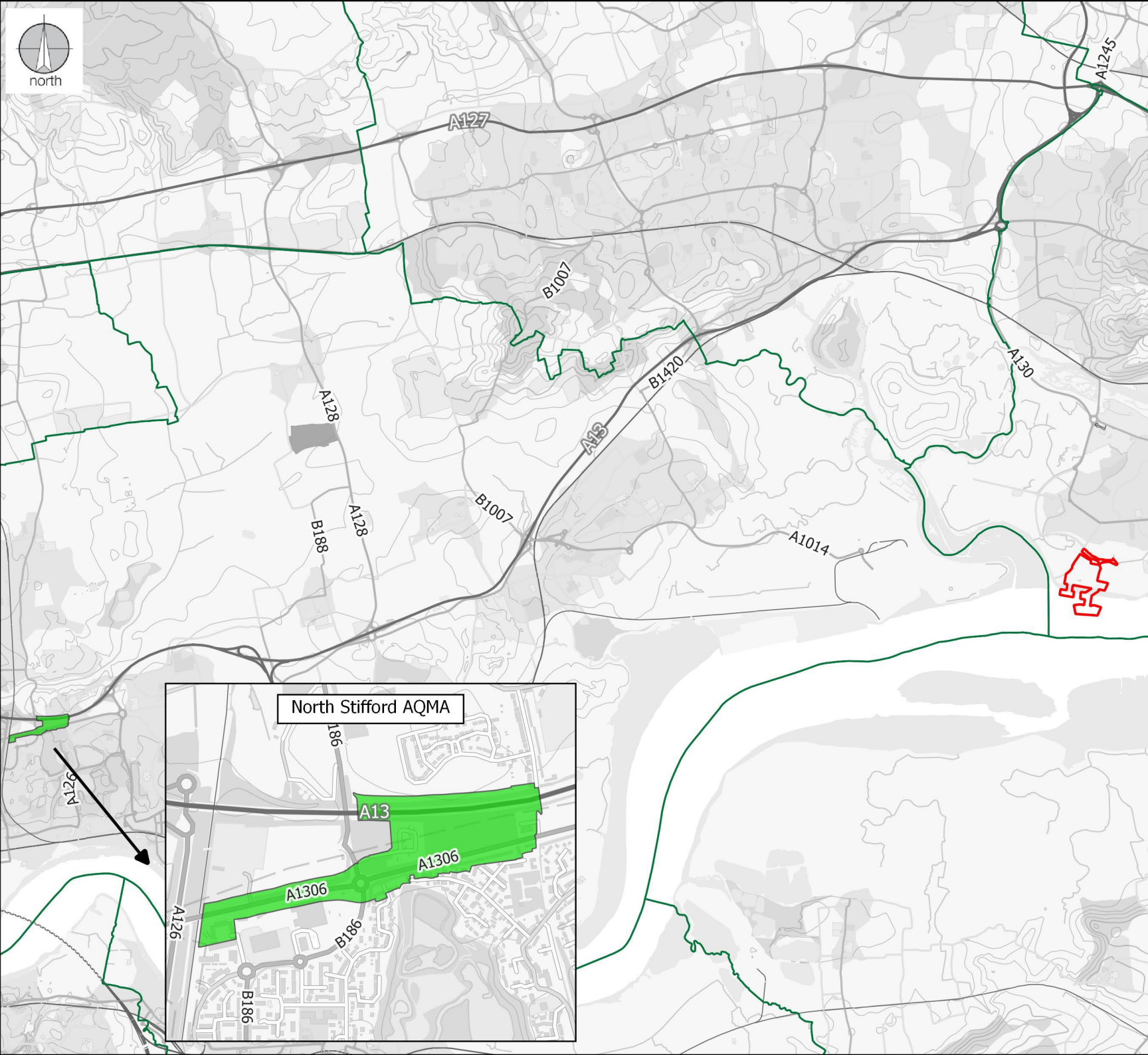
Source: Air Quality Consultants Ltd

Drawn by: FM




Date: 03/21



Contains Ordnance Survey data © Crown copyright and database right 2021. Ordnance Survey licence number 100046099. Additional data sourced from third parties, including public sector information licensed under the Open Government Licence v1.0.



KEY

-  OMSSD Project Boundary
-  Local Authority Boundaries
-  North Stifford AQMA

OIKOS MARINE & SOUTH SIDE DEVELOPMENT

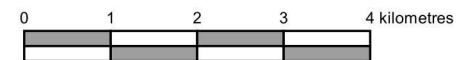
FIGURE 12.7

TITLE: NORTH STIFFORD AQMA

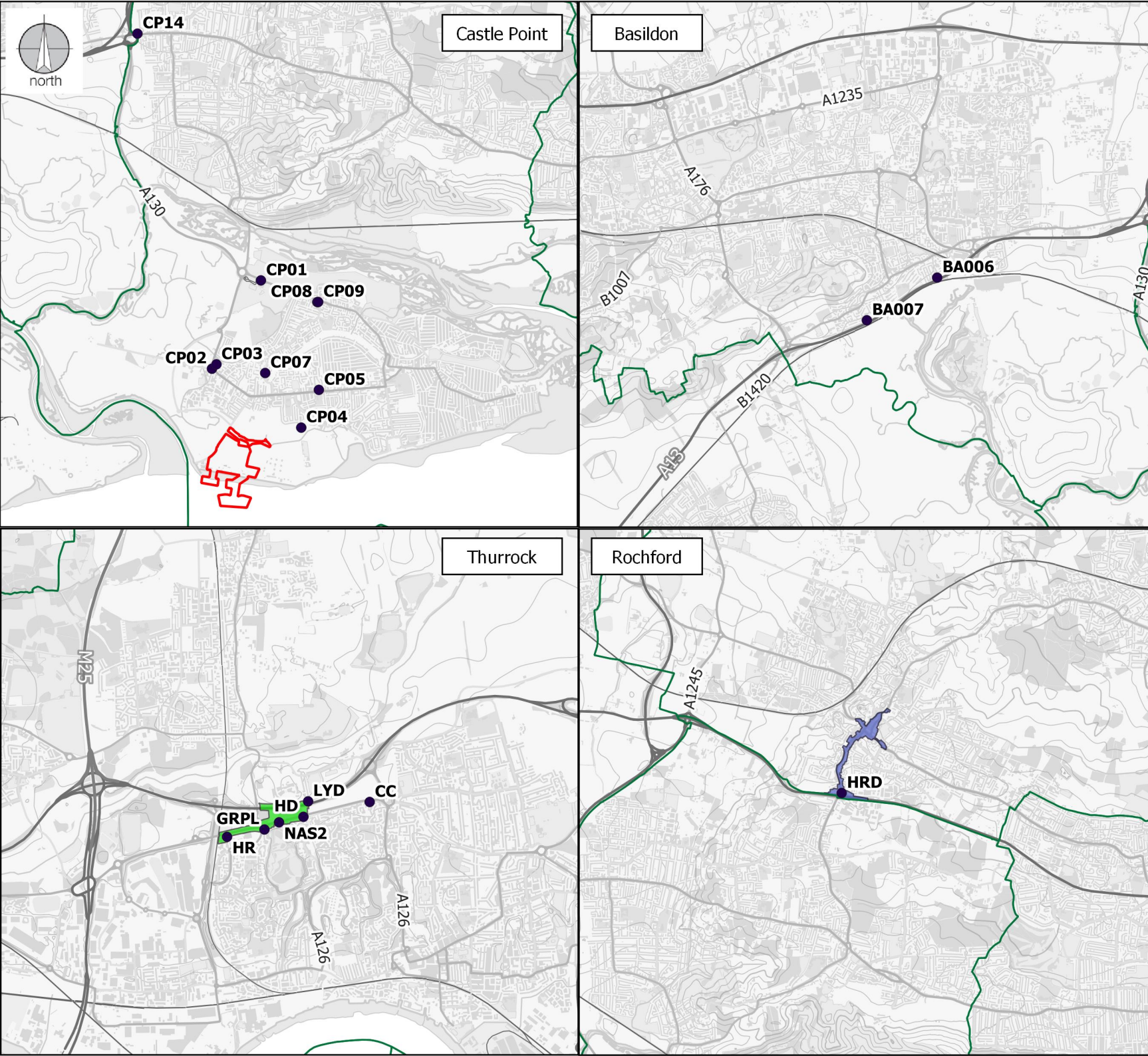
Source: Air Quality Consultants Ltd

Drawn by: FM

Date: 03/21



Contains Ordnance Survey data © Crown copyright and database right 2021. Ordnance Survey licence number 100046099. Additional data sourced from third parties, including public sector information licensed under the Open Government Licence v1.0.





KEY

OMSSD Project Boundary

20 m Distance Band

OIKOS MARINE & SOUTH SIDE DEVELOPMENT

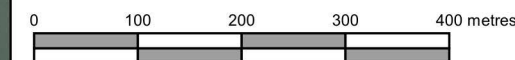
FIGURE 12.9

TITLE: 20 M DISTANCE BAND AROUND OMSSD BOUNDARY

Source: Air Quality Consultants Ltd

Drawn by: FM

Date: 03/21



Imagery ©2021 Google, Imagery ©2021 Get mapping plc, Infoterra Ltd & Bluesky, Landsat / Copernicus, Maxar Technologies, The GeoInformation Group.



KEY

- OMSSD Project Boundary
- Construction Traffic Route
- 50 m Distance Band

OIKOS MARINE & SOUTH SIDE DEVELOPMENT

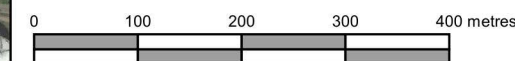
FIGURE 12.10

TITLE: 50 M DISTANCE BAND AROUND ROADS USED BY CONSTRUCTION TRAFFIC WITHIN 500 M OF OMSSD BOUNDARY

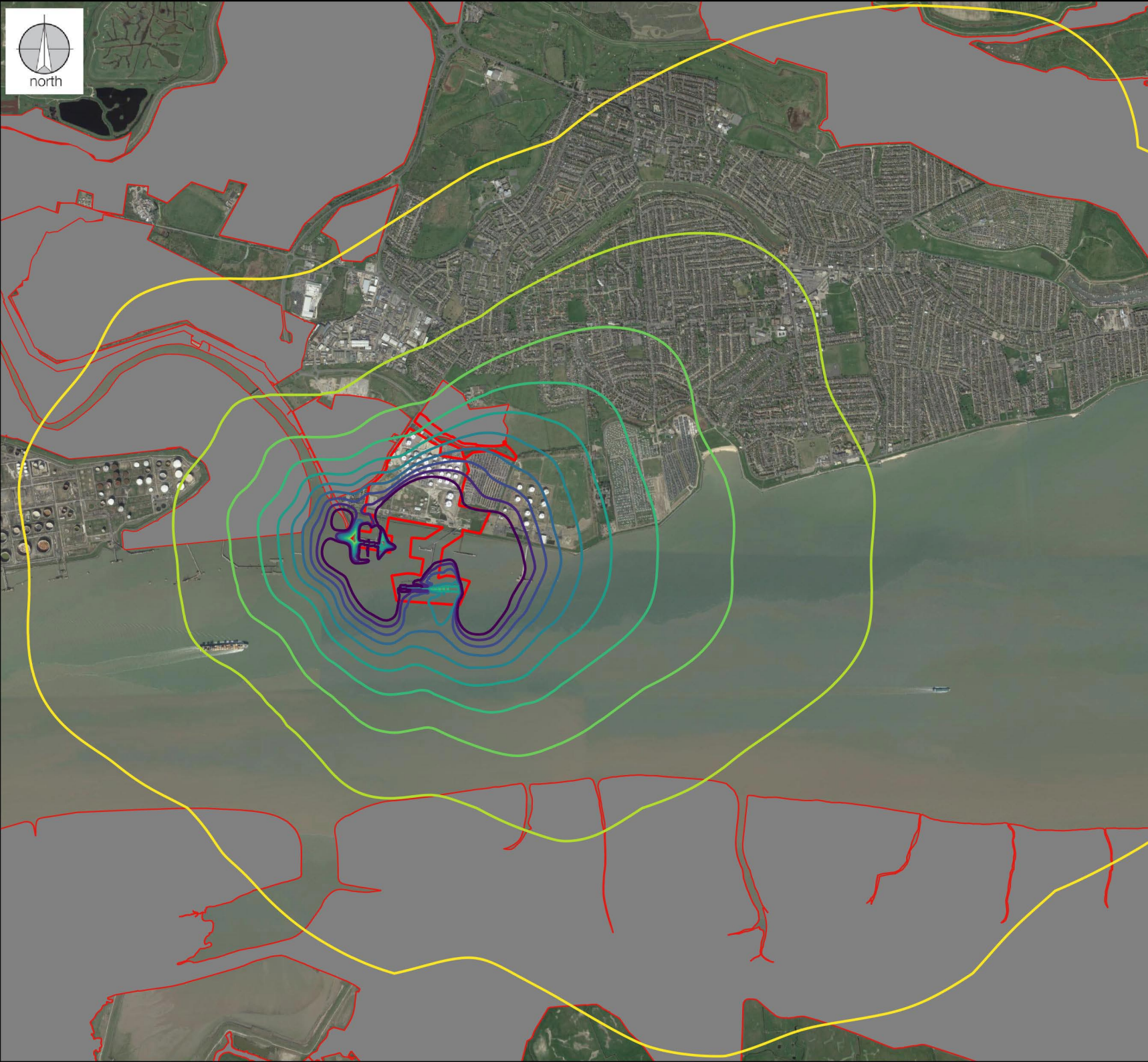
Source: Air Quality Consultants Ltd

Drawn by: FM

Date: 03/21




Imagery ©2021 Google, Imagery ©2021 Get mapping plc, Infoterra Ltd & Bluesky, Landsat / Copernicus, Maxar Technologies, The GeoInformation Group.



KEY

 OMSSD Project Boundary

 Designated Habitats

Annual Mean NO_x Process Contribution
(µg/m³)

 0.3 (1%)

 0.6 (2%)

 0.9 (3%)

 1.2 (4%)


 1.5 (5%)

 1.8 (6%)

 2.1 (7%)

 2.4 (8%)

 2.7 (9%)

 3.0 (10%)

OIKOS MARINE & SOUTH SIDE
DEVELOPMENT

FIGURE 12.11

TITLE: CONTOUR PLOT OF ANNUAL MEAN
NO_x PCS

Source: Air Quality Consultants Ltd

Drawn by: FM

Date: 03/21



Imagery ©2021 Google, Imagery ©2021 Get mapping plc, Infoterra Ltd & Bluesky,
Landsat / Copernicus, Maxar Technologies, The GeoInformation Group.



KEY

 OMSSD Project Boundary

 Designated Habitats

Nutrient Nitrogen Deposition
Process Contribution (kgN/ha/yr)

 0.1 (1% of CL = 10 kgN/ha/yr)

 0.2 (1% of CL = 20 kgN/ha/yr)

OIKOS MARINE & SOUTH SIDE DEVELOPMENT

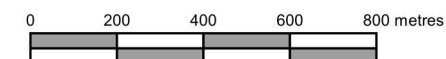
FIGURE 12.12

TITLE: CONTOUR PLOT OF ANNUAL MEAN
NUTRIENT NITROGEN DEPOSITION PCS

Source: Air Quality Consultants Ltd

Drawn by: FM

Date: 03/21



Imagery ©2021 Google, Imagery ©2021 Get mapping plc, Infoterra Ltd & Bluesky,
Landsat / Copernicus, Maxar Technologies, The GeoInformation Group.





KEY

 OMSSD Project Boundary

 Designated Habitats

Acid Nitrogen Deposition
Process Contribution (keq/ha/yr)

 0.0073 (1% of CL for South Thames
Estuary and Marshes SSSI)

 0.0139 (1% of CL for Thames
Estuary and Marshes SPA)

OIKOS MARINE & SOUTH SIDE DEVELOPMENT

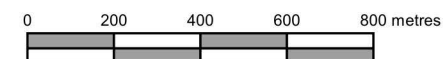
FIGURE 12.13

TITLE: CONTOUR PLOT OF ANNUAL MEAN
ACID NITROGEN DEPOSITION PCS

Source: Air Quality Consultants Ltd

Drawn by: FM

Date: 03/21



Imagery ©2021 Google, Imagery ©2021 Get mapping plc, Infoterra Ltd & Bluesky,
Landsat / Copernicus, Maxar Technologies, The GeoInformation Group.